

Ίκαρος Ν. Σμ. **58 - 71** Ερμής Αργ/λης

71%	17 / 24	FT	16 / 23	70%
48%	13 / 27	2FG	20 / 41	49%
15%	5 / 33	3FG	5 / 19	26%
33	27 - 6	Rb	35 - 12	47
	12	Tu	14	

Referees: Πέππας, Αντωνέλου, Ανδρεόπουλος

By Quarter	1	2	3	4
Ίκαρος Ν. Σμ.	19	19	12	8
Ερμής Αργ/λης	15	18	23	15

End of Quarter	1	2	3	4
Ίκαρος Ν. Σμ.	19	38	50	58
Ερμής Αργ/λης	15	33	56	71



Ερμής Αργ/λης

Coach: Π. Γκαναβίας, Σ. Μουσιδής

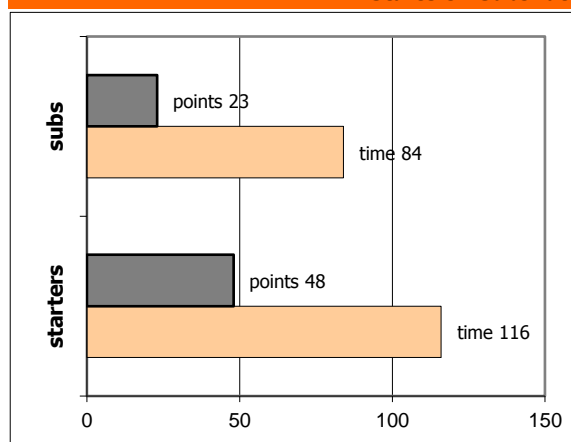
Fastbreaks: 8 / 9

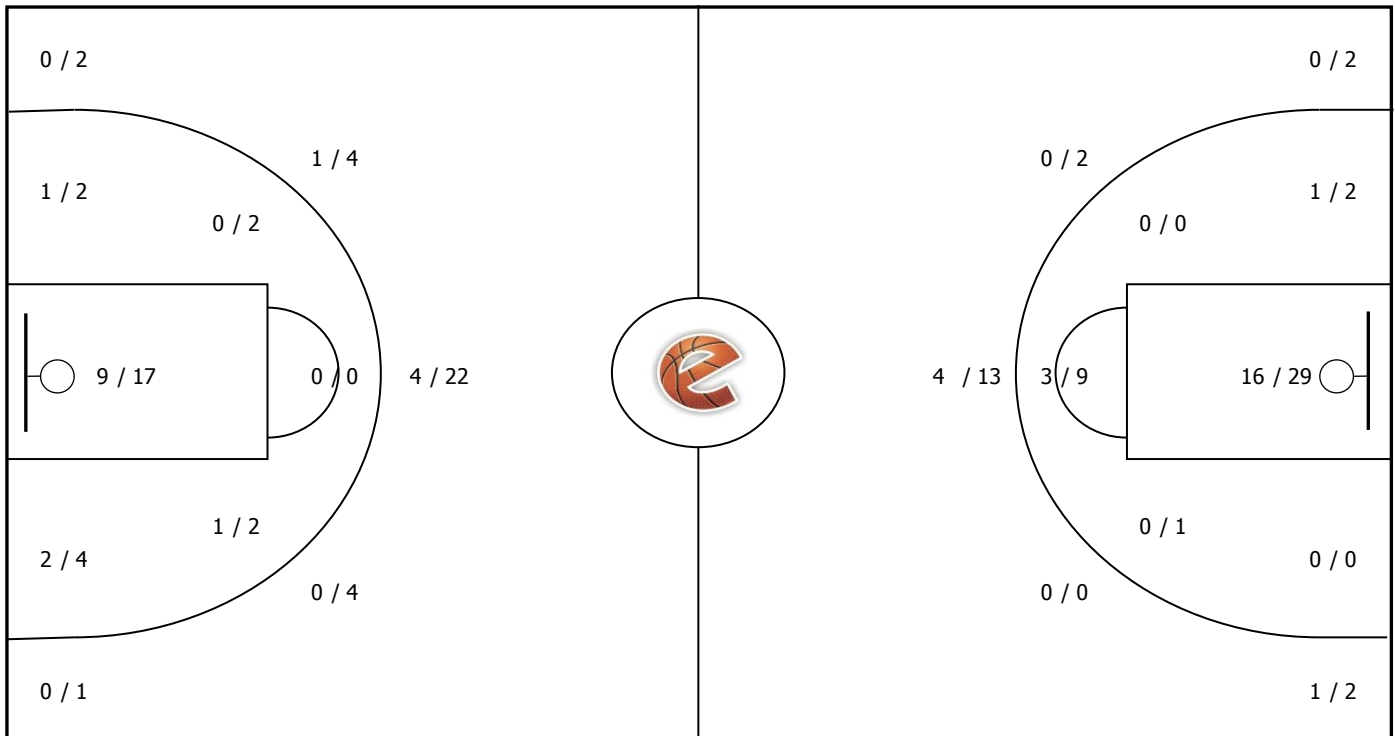
#	Player	Time (min)	Pts	Ft	2Fg	3Fg	+/-	Rbs		As	St	Tu	Bl	Fouls		Eff
								de	of					dr	co	
4	Μαρής Ι.	7	2	0 / 0	1 / 2	0 / 0	-3	0	1	0	0	0	0	0	0	2
5	Μπαλαμώτης Ι.	13	0	0 / 0	0 / 0	0 / 1	8	2	0	2	0	1	0	0	2	2
6	<b>Καβαλαράκης Ν.</b>	<b>25</b>	<b>15</b>	<b>2 / 5</b>	<b>5 / 11</b>	<b>1 / 4</b>	<b>3</b>	<b>5</b>	<b>1</b>	<b>2</b>	<b>0</b>	<b>2</b>	<b>0</b>	<b>4</b>	<b>2</b>	<b>9</b>
7	<b>Σκόνδρας Π.</b>	<b>17</b>	<b>4</b>	<b>1 / 2</b>	<b>0 / 2</b>	<b>1 / 1</b>	<b>0</b>	<b>4</b>	<b>1</b>	<b>2</b>	<b>0</b>	<b>0</b>	<b>2</b>	<b>1</b>	<b>2</b>	<b>10</b>
8	Ζέγγος Θ.	24	13	2 / 2	4 / 4	1 / 2	20	2	1	0	2	1	0	2	2	16
9	Παπαδάκης Θ.	8	3	1 / 1	1 / 2	0 / 0	-4	1	0	0	1	3	0	1	2	1
10	<b>Φωτόπουλος Θ.</b>	<b>35</b>	<b>13</b>	<b>2 / 2</b>	<b>4 / 10</b>	<b>1 / 5</b>	<b>19</b>	<b>9</b>	<b>3</b>	<b>4</b>	<b>1</b>	<b>4</b>	<b>1</b>	<b>3</b>	<b>1</b>	<b>17</b>
23	Γρηγόρας Σ.	16	2	2 / 2	0 / 1	0 / 0	-7	3	3	0	1	0	0	1	3	8
12	Αυδής Α.	0	0	0 / 0	0 / 0	0 / 0	0	0	0	0	0	0	0	0	0	-
13	<b>Ρετινιάς Δ.</b>	<b>27</b>	<b>10</b>	<b>4 / 7</b>	<b>3 / 5</b>	<b>0 / 1</b>	<b>15</b>	<b>6</b>	<b>2</b>	<b>3</b>	<b>4</b>	<b>2</b>	<b>0</b>	<b>4</b>	<b>3</b>	<b>17</b>
14	<b>Μαυραντζώτου Γ.</b>	<b>12</b>	<b>6</b>	<b>2 / 2</b>	<b>2 / 4</b>	<b>0 / 1</b>	<b>6</b>	<b>1</b>	<b>0</b>	<b>1</b>	<b>0</b>	<b>1</b>	<b>0</b>	<b>1</b>	<b>0</b>	<b>4</b>
15	Δέδες Γ.	16	3	0 / 0	0 / 0	1 / 4	8	1	0	2	0	0	0	0	2	3
Team								1	0			0		0	0	
1st quarter			15	0 / 0	6 / 16	1 / 4		8	6	5	1	2	1	1	2	21
2nd quarter			18	3 / 4	6 / 7	1 / 5		6	1	3	2	6	1	4	7	19
3rd quarter			23	7 / 12	5 / 7	2 / 5		11	1	4	3	5	1	7	6	28
4th quarter			15	6 / 7	3 / 11	1 / 5		10	4	4	3	1	0	5	4	22
<b>Final Stats</b>		<b>200</b>	<b>71</b>	<b>16 / 23</b>	<b>20 / 41</b>	<b>5 / 19</b>	<b>65</b>	<b>35</b>	<b>12</b>	<b>16</b>	<b>9</b>	<b>14</b>	<b>3</b>	<b>17</b>	<b>19</b>	<b>90</b>
				<b>70%</b>	<b>49%</b>	<b>26%</b>		<b>47</b>								

Ίκαρος Ν. Σμ.

#	Player	Pts	-	3s
4	<b>Γκολιάς Γ.</b>	<b>11</b>	-	<b>2</b>
5	Γεωργόπουλος Π.	1	-	0
3	Λάκα Ν.	3	-	1
7	Καλαντζής Μ.	0	-	0
8	<b>Ραδίτσας Σ.</b>	<b>4</b>	-	<b>0</b>
9	<b>Γιαννακοδήμος Μ.</b>	<b>9</b>	-	<b>0</b>
10	Φραντζέτης Χ.	1	-	0
17	Τολίζας Α.	0	-	0
19	κοκκορόγιαννης Α.	0	-	0
22	Ντόκας Χ.	0	-	0
24	<b>Αντωνούσος Ε.</b>	<b>14</b>	-	<b>1</b>
15	<b>Δαμιανάκος Χ.</b>	<b>15</b>	-	<b>1</b>

Starters - Subs ratio

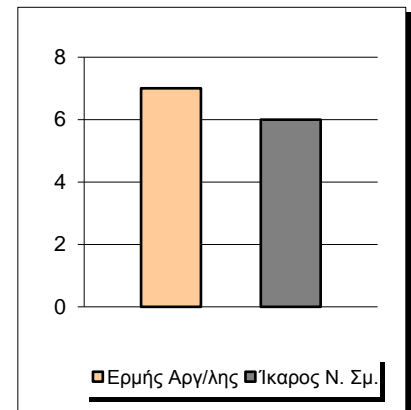
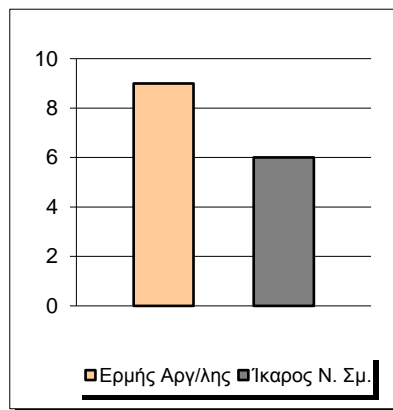
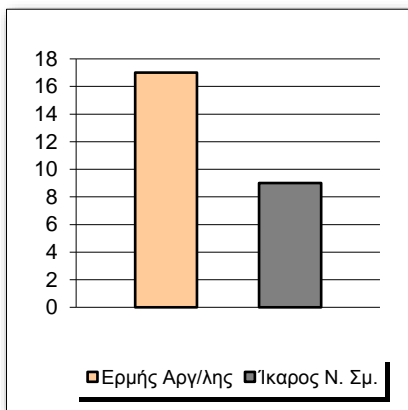




Fastbreak Pts

Turnover Pts

Second Chance Pts

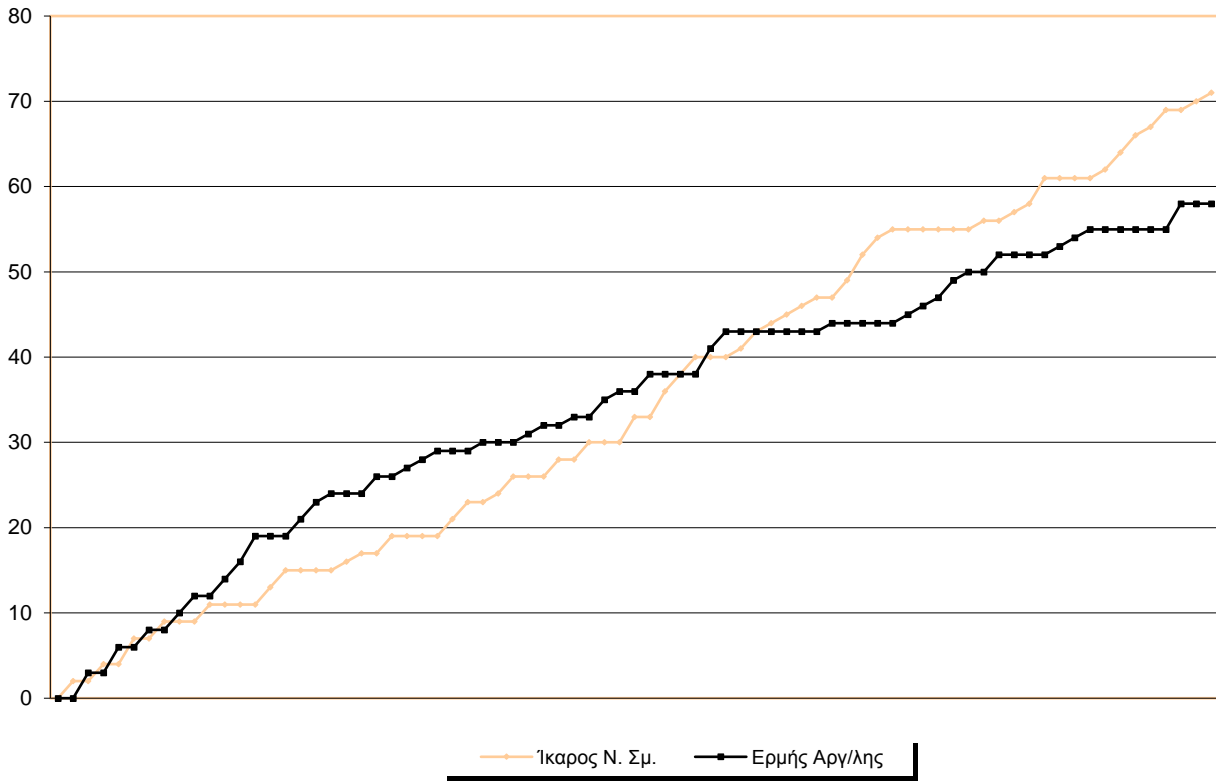


NOTES

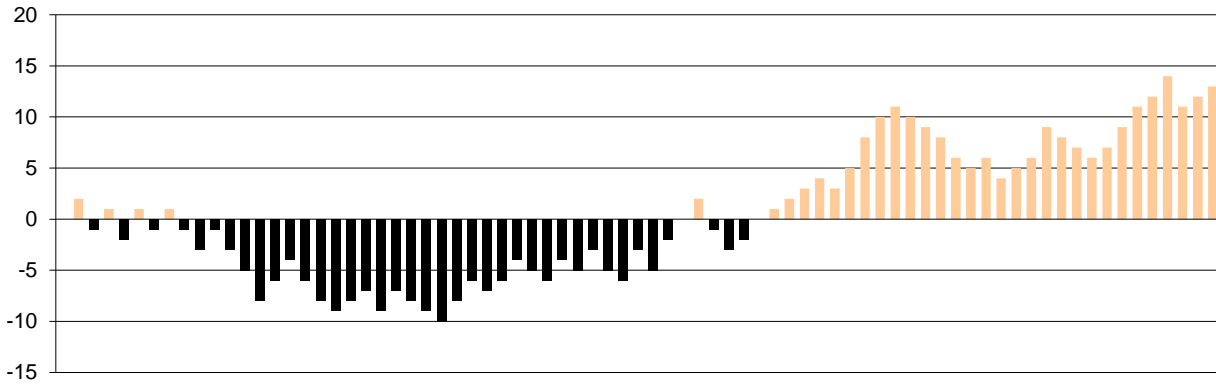
Blank area for notes.

**GRAPHIC STATS**

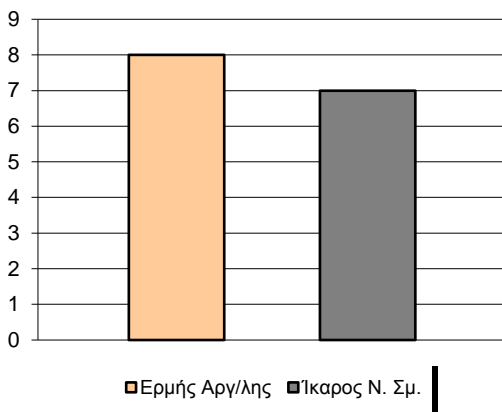
**SCORE EVOLUTION**



**SCORE DIFFERENCE**



**LARGEST SCORING RUN**



**LARGEST LEAD**

